

BEFORE YOUR SHOP:

1. Review and sign off on your Shop Instructions (this page).
2. Review the Blank Survey - this is a pre-shop tool meant to help you familiarize yourself with the survey questions and format.
3. Know your assigned location and timeframe.
4. You must go on your assigned shop date - plan ahead!
5. Review photo and receipt requirements (outlined below).

If you have questions regarding this assignment, contact BestMark immediately. Do NOT attempt to complete this shop until you have reviewed all your shop materials and fully understand the shop requirements.

Send all inquiries to shops@bestmark.com or your scheduler.

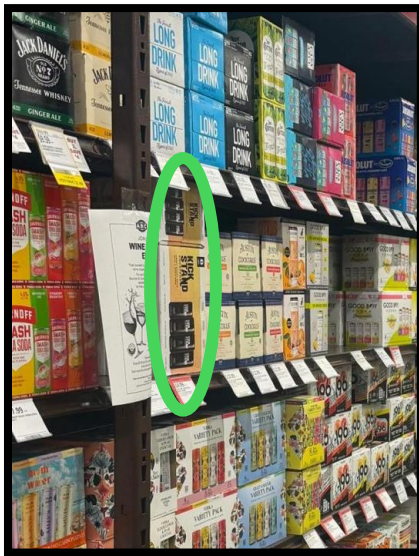
PROJECT SPECIFICATIONS

****** You MUST be 21+ to complete this shop! *****

You will visit your assigned location and locate **“Kickstand Cocktails” variety 8-pack** (including 4 flavors). Once you’ve located the product in store, you will take a minimum of TWO photos showing the product merchandising and where it is displayed in store and on the shelf.

After you’ve taken your photos, select **FOUR Kickstand variety 8-packs** and proceed then proceed to the cashier to purchase your items. You will be reimbursed for the purchase of up to **FOUR (4) Kickstand variety 8-packs**. There is a current promotion running at these locations. Please take advantage of this offer during your visit.

KICKSTAND COCKTAILS VARIETY 8-PACK



PRODUCT AVAILABILITY / SELECTION

- If you are having trouble locating the brand/product in store, you must seek assistance from an associate after looking for 5 minutes.
- This shop requires you to **purchase FOUR(4) Kickstand variety 8-packs** during your shop.
 - If the location only has ONE pack in stock/available for purchase, you MUST purchase the maximum number you can AND provide details on your shop report submission.
 - In the rare instance, there aren't any for sale, you are still required to take photos of the empty shelf/aisle (where the product would have been stocked) confirm with a sales associate that there are not ANY in stock AND provide details in your shop report submission.

Example of acceptable empty shelf/aisle photos, in the event the Kickstand variety 8-pack is not available for purchase (shown below):

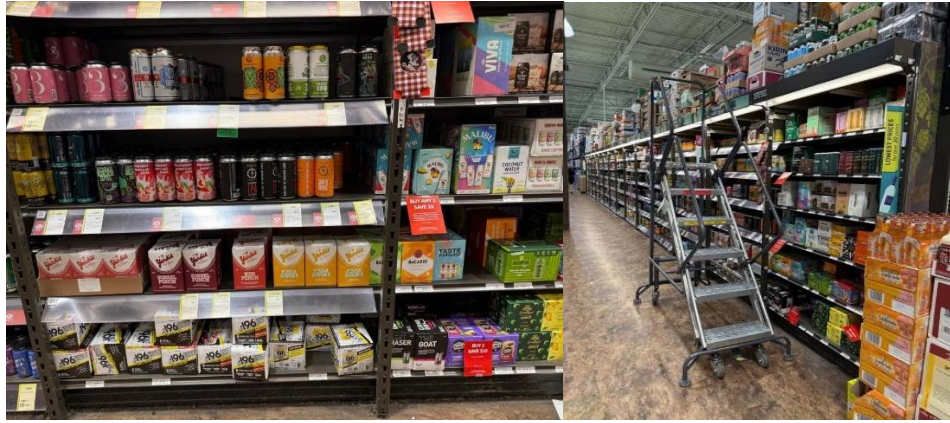


PHOTO / RECEIPT VALDIATION

- You must provide a minimum of TWO photos showing the product merchandising and where it is displayed in store and on the shelf OR photos of the empty shelf/aisle (where the product would have been stocked)
- You must upload a copy of your itemized receipt including the amount spent and location visited.
 - **If the product is not available for purchase, you may submit a photo of the empty shelf/aisle along with a photo of the location's exterior for validation purposes.**
- You must upload your SELFIE PHOTO in the RECEIPT UPLOAD space to attach the image to your survey.

AFTER YOUR SHOP:

- Complete and submit your survey by the due date and time (as noted above). The deadline is noted in Eastern standard time. If your survey is not submitted by the deadline, it will be automatically cancelled.
- Answer all questions accurately and provide detailed supporting narrative to explain your responses.
- If a Quality Assurance Editor contacts you for additional information or clarification about your experience, respond promptly on the same day. You should respond directly to the QA Editor who contacted you.



STORE VISIT

Location 123 Main Street
N/A, NY 12345

Shop Details

Shop Date _____ Shop Day _____
 Start Time _____ End Time _____
 Dispatch ID 5697853 Shop Type D _____

Kickstand - Store Presence

Was the Kickstand Cocktails variety 8-pack available for purchase?

Yes No

0 / 10

If yes, where was it located in the store and on the shelf?

Did you need to seek assistance in order to locate the product?

Yes No

How many 8-pack cases did you purchase?

Please upload at least 2 photos of the 8-pack on the shelf (or in the aisle):

Explain the responses you provided above for the Kickstand store presence questions: